

CONTENTS

INTRODUCTION	2
SVT FOCUS SPECIFIC FEATURES	4
ENGINE/TRANSMISSION/DRIVETRAIN	9
CHASSIS	11
MAINTENANCE	14
A WORD ABOUT WARRANTY COVERAGE	16

All rights reserved. Reproduction by any means, electronic or mechanical including photocopying, recording or by any information storage and retrieval system or translation in whole or part is not permitted without written authorization from Ford Motor Company.

Copyright 2001 Ford Motor Company

INTRODUCTION

INTRODUCTION

Welcome to the Ford Special Vehicle Team (SVT) family and thank you for purchasing the Ford SVT Focus. We trust that our tremendous dedication to the automotive enthusiast's total ownership experience will provide you with many miles of exhilarating, safe, and comfortable driving in your new SVT Focus.

SVT strives for balance between powertrain and chassis, cornering prowess and long-distance comfort, always working to build vehicles in which no one system overwhelms or overshadows another. In the SVT Focus, that philosophy is carried forward through a sophisticated powertrain as well as significant interior, exterior, suspension, and braking system components.

This supplement compliments your Focus Owner's Guide and provides information specific to SVT and the SVT Focus. By referring to the pages listed in this supplement, you can identify those features, recommendations, and specifications unique to your new SVT Focus.

If you have any questions, please call us at the hotline from 8:30 a.m. to 6:00 p.m. EST at 1-800-FORD-SVT (1-800-367-3788).

SVT HISTORY

The Ford Special Vehicle Team (SVT) was established in 1991. SVT was commissioned to create

factory-produced driver's vehicles; vehicles that possess a balance between engine and chassis, roadholding and a supple ride, refinement and performance capability. These qualities are the core of the SVT product development philosophy.

To support SVT, Ford Motor Company created a dedicated product development group. The nucleus of the Ford SVT is a small, cross-functional group of engineers, product planners, and marketing people who meet on a weekly basis to ensure SVT vehicles and their mission remain focused. In addition, SVT draws heavily on the talents and knowledge of other driving enthusiasts at Ford who work in the key disciplines of design, product development, manufacturing and marketing. The heart of the SVT philosophy is a deep commitment to skillful and enthusiastic driving. The ultimate goal of everyone at SVT is to create vehicles that speak to the needs and desires of the knowledgeable driving enthusiast.

Every SVT vehicle produced has been designed and developed with four key virtues in mind: Performance, Substance, Exclusivity, and Value. These hallmarks have driven the SVT Mustang Cobra since 1993, the original SVT Lightning from 1993 to 1995, the SVT Contour introduced in early 1997 as a 1998 model, the 1999-2001 SVT F-150 Lightning and the 2002 SVT Focus.

INTRODUCTION

SVT OWNERSHIP BENEFITS

- **SVT Authorized Dealer:** A group of approximately 600 specially trained and certified SVT dealers who are dedicated to a culture within their dealership that are friendly to the knowledgeable driving enthusiast.

- **SVT Premium Service:** Owners and lessees of 2002 model year SVT vehicles will be provided with a complimentary loaner vehicle when their 2002 SVT vehicle is in for service (includes warranty work and routine maintenance, other than oil changes). The dealership will also wash and vacuum the customer's vehicle, unless requested otherwise.

- **SVT Owner's Association One Year Membership:** The SVT Owner's Association is a club designed to enhance the experience of owning an SVT vehicle through events and learning activities, as well as the camaraderie of spending time with other SVT enthusiasts. Your new vehicle purchase or lease entitles you to a free one year membership.

- **Discount at the Bob Bondurant School of High Performance Driving:** The techniques learned at the Bondurant School enhance the driving of any car, anywhere. The SVT discount is available to you for one year from the date of purchase.

- **Certificate of Authenticity:** In recognition of your vehicle's exclusivity, the certificate

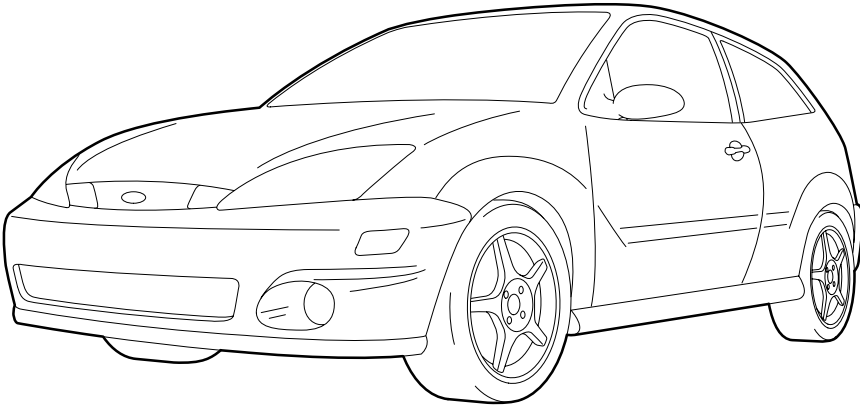
documents your vehicle's date of production, vehicle identification number, final assembly plant and production sequence number. Certificates are printed 60 to 90 days after production is complete, and will be mailed to you automatically.

- **SVT Info Center:** Have a question or want information about your SVT vehicle, or any of our new products? Please call the SVT Info Center at 1-800-FORD-SVT. We'll handle your request or get you in touch with someone who can.

- **SVT Website:** The official SVT site, www.svt.ford.com, will provide you with frequently updated information on products, events and many other areas of interest for SVT owners.

- **Official SVT Merchandise:** Let the world know you are an SVT fan, and look sharp at the same time. We have completely updated the SVT apparel lineup, with higher quality, brand name merchandise.

SVT FOCUS SPECIFIC FEATURES



SVT FOCUS SPECIFIC FEATURES

- 2.0 L SVT Zetec engine with 170 horsepower
- Getrag™ 6-speed transmission
- Unique rear spoiler
- Tuned tubular stainless steel exhaust manifold
- Unique mesh grilles and fog lamps built into the front fascia
- Unique rear hatch cargo net
- Aluminium gearshift knob with leather accent
- Leather park brake handle
- 17" wheels and 215/45 R 17 tires
- Audiophile audio system
- 300 mm vented front disc brakes/280 mm solid rear disc brakes
- Unique front and rear fascias
- Break away, power, heated body-color mirrors
- Black leather seats with blue or red cloth inserts

Options

- Audiophile audio system (6 disc, 8" subwoofer, front speakers)
- Cold weather package (traction control, heated front seats, engine block heater)

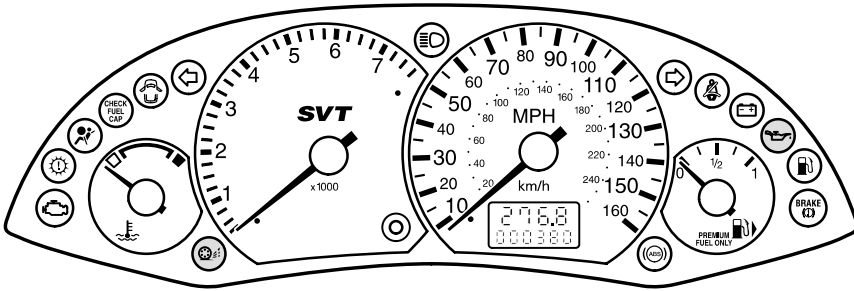
Exterior:

- Infra-Red, CD-Silver, Pitch Black or Sonic Blue

Interior:

- Leather sport seats with blue or red inserts
- Unique black center stack
- Silver climate control bezels
- Aluminium gearshift knob with leather accent
- Leather park brake handle
- Floor mats
- Tip/fold 60/40 split rear seats with headrests

SVT FOCUS SPECIFIC FEATURES



SVT INSTRUMENT CLUSTER

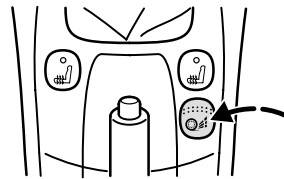
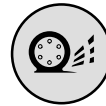
Traction Control indicator light (if equipped)

Momentarily illuminates when the ignition is turned on to confirm that the system is operational.

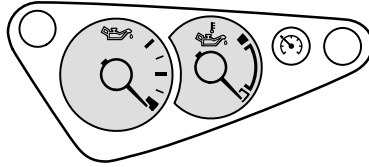
While driving, the light flashes when the feature is active. The control switch will toggle the feature on or off, but the feature will default to on after each cycle of the ignition key. The light illuminates continuously when the feature is switched off.

After turning the ignition on, if the light does not illuminate or illuminates continuously (assuming the light has not come on as a result of pressing the Traction Control switch, which disables the system) while driving, it indicates a malfunction. During a malfunction the system switches off. Have the system serviced.

For information on the other warning and indicator lights in the clusters, refer to the **Focus Owner's Guide**.



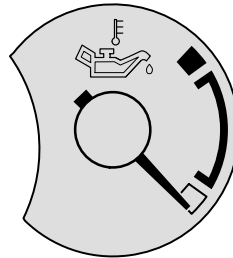
SVT FOCUS SPECIFIC FEATURES



SVT AUXILIARY INSTRUMENT CLUSTER

Oil temperature gauge

Indicates the temperature of the the engine oil. At normal operating temperature, the needle remains within the normal area. If it enters the red section, the engine is overheating. Stop the vehicle as soon as safely possible, switch off the engine immediately and let the engine cool. Refer to *Engine oil* in the **Focus Owner's Guide**.



This gauge indicates the temperature of the engine oil, not the oil level. If the oil pressure falls below the normal range due to low oil level, the engine oil pressure warning light in the main instrument cluster will illuminate. Stop the vehicle as soon as safely possible and switch off the engine immediately. Check the oil level and add oil if needed. Refer to *Engine oil* in the **Focus Owner's Guide**.

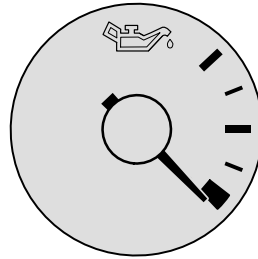
SVT FOCUS SPECIFIC FEATURES

Oil pressure gauge

This gauge indicates engine oil pressure up to a recommended safe maximum value. During normal driving the indicated oil pressure will vary with engine speed, the pressure rising as engine speed rises and dropping as engine speed drops.

Driving with your oil pressure gauge pointer continuously at the top of the scale may damage the engine.

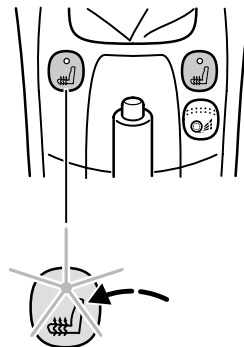
If the engine oil pressure drops below the normal range, the oil pressure gauge pointer will drop to the bottom of the gauge scale and the engine oil pressure warning light in the main instrument cluster will illuminate. Stop the vehicle as soon as safely possible and switch off the engine immediately. Check the oil level and add oil if needed. Refer to *Engine oil* in the **Focus Owner's Guide**.



Heated front seats (if equipped)

The heated front seats are operated by switches located on the centre console. The light in the switches indicates operation. The maximum temperature is reached after five or six minutes. It is regulated thermostatically.

The seat heating will operate when the ignition switch is in position II.



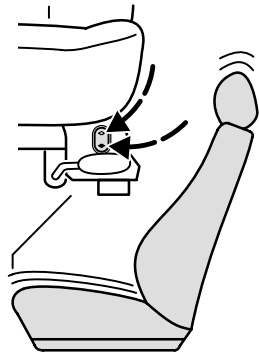
Heating with the engine off will drain the battery.

SVT FOCUS SPECIFIC FEATURES

DRIVER'S POWER SEAT ADJUSTMENT

Press the upper portion of the rocker switch to raise the height of the seat.

Press the lower portion of the rocker switch to lower the height of the seat.



FUSES AND RELAYS

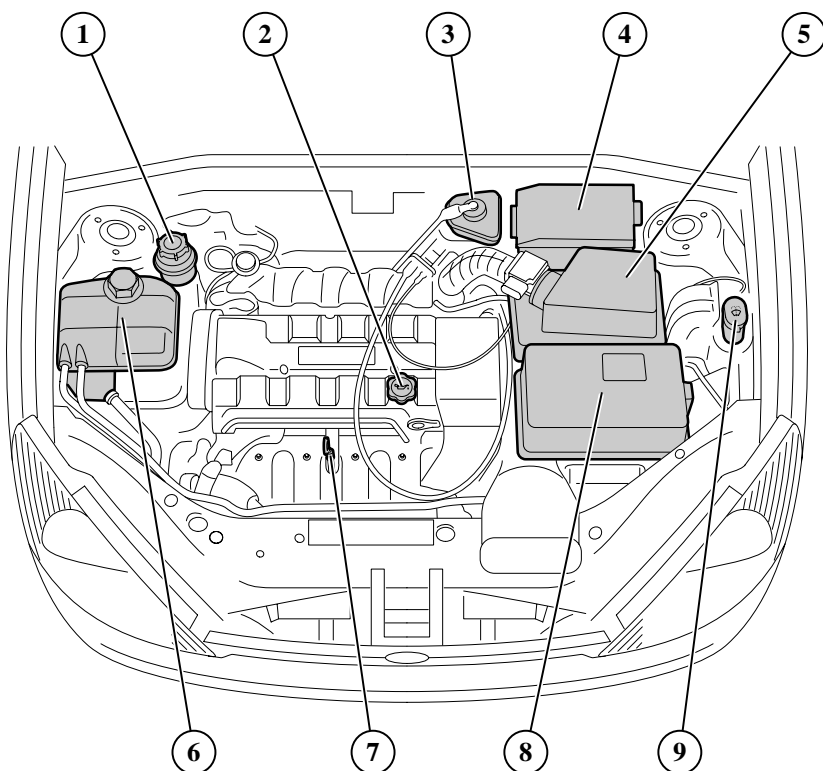
Passenger compartment fuse panel		
Fuse	Fuse amp. rating	Description
33	20	Horn, power seat
47	20	Cigar lighter, center power point
50	7.5	Heated mirrors
52	15	Heated front seats

Relays in the passenger compartment fuse panel	
Relay	Description
25	Rear defrost, heated mirrors

Power distribution box		
Fuse	Fuse amp. rating	Description
24	30	Powered subwoofer

ENGINE/TRANSMISSION/DRIVETRAIN

2.0 L SVT ZETEC ENGINE



1. Power steering fluid reservoir
2. Engine oil filler cap
3. Brake/clutch fluid resevoir
4. Power distribution box
5. Air filter assembly
6. Engine coolant reservoir
7. Engine oil dipstick
8. Battery
9. Windshield washer fluid reservoir

ENGINE/TRANSMISSION/DRIVETRAIN

ENGINE DATA

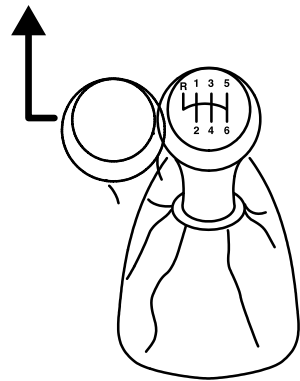
Engine	2.0 L SVT Zetec engine
Cubic inches	121
Horsepower	170 @ 7000 rpm
Torque	145 lb-ft @ 5500 rpm
Recommended fuel	91 octane
Firing order	1-3-4-2
Spark plug gap	1.3 mm (0.051 inch)
Ignition system	Electronic ignition
Compression ratio	10:2:1

6-SPEED TRANSMISSION

Shift pattern

The shift pattern is shown opposite.

To select reverse gear, shift the lever into neutral position and then move the lever fully to the left-hand side of the gate against the spring pressure. Once the lever is fully to the left, push it forward into the reverse gear position.



DRIVETRAIN

Item	Description		
Transaxle	Getrag™ Twin Layshaft 6-speed manual		
Gear ratios	Gear	Overall ratio	Speed (mph)
	1st	12.7:1	15
	2nd	7.7:1	25
	3rd	5.7:1	35
	4th	4.6:1	45
	5th	3.8:1	55
	6th	3.1:1	60
	Reverse	12.0:1	-

CHASSIS

SUSPENSION

- Front suspension: MacPherson strut, retuned struts, 22 N/mm springs, 21 mm Stabilizer Bar
- Rear suspension: Multilink, retuned shocks, 27.5 N/mm spring, 21 mm Stabilizer Bar

STEERING

Type	Power assist, rack and pinion
Turns, lock to lock	2.6
Turning diameter	39.1 ft

BRAKES

- The braking on the SVT Focus provides improved performance and fade resistance to meet the demands of the driving enthusiast.
- Swept area is 18% larger on front rotors.

Front	300 mm (11.8 in.) vented disc, single-piston caliper
Rear	280 mm (11.0 in.) solid disc, single-piston caliper
ABS	Four-channel, four-sensor system

CHASSIS

WHEELS AND TIRES

Tires	Size: 215/45 R 17 (front/rear)
	Pressure: 32/29 PSI (front/rear)
Wheels	SVT-signature style, 17x7", 49 mm offset, aluminium 5-spoke wheels

For winter driving, it is recommended to install radial winter tires.

These are designed to improve traction in adverse winter weather conditions.

When installing winter tires:

- Only radial ply winter tires may be installed.
- For recommended wheel and tire package, call the SVT hotline at (800)FORD-SVT or ask your SVT dealer.
- Winter tires of the same size and type must be mounted on all four wheels.
- Winter tires must have the same load capacity as the vehicle's original equipment tires.

CHASSIS

WARNING:

- Do not exceed 75 miles per hour (120 km/h) in a vehicle equipped with winter tires.
- Winter tires available for your vehicle will likely have a maximum speed rating which is less than the maximum speed of your vehicle.

Driving faster than the maximum speed for which the tires are rated and approved may lead to sudden tire failure. This can cause loss of

vehicle control or may lead to an accident and personal injury.

- Always observe posted speed limits and adjust your driving to prevailing road and traffic conditions.
- Have the wheel and tire assemblies balanced every time the tires are dismounted.
- The use of snow cables or chains on the 215/45 R 17 tires is not recommended for this vehicle, as damage to your vehicle may occur.

Approved wheel and tire specifications:

Tire size	Recommended Wheel
215/45 R 17	17" Original Equipment wheel (17" x 7.0") or equivalent
205/55 R 16	Ford 1S4Z-1007-BA (16" x 6.0") or equivalent

SPARE TIRE AND WHEEL

Your vehicle is equipped with a T125/85 R 16 spare tire on an aluminium wheel rim. This is for temporary use only. Replace with a new or repaired road tire and wheel as soon as possible.

MAINTENANCE

MOTORCRAFT PART NUMBERS

Component	2.0 L SVT Zetec engine
Air filter	FA-1688
Battery	BXT-96R
Oil filter	FL-400 S
PCV valve	EV-250
Spark plug	AYFS-092-FEC

REFILL CAPACITIES

Fluid	Ford Part Name	Capacity
Brake fluid	Motorcraft High Performance DOT 3 brake fluid.	Fill to line on reservoir
Engine oil (includes filter change)	Motorcraft 5W30 GF3 Super Premium Motor Oil	4.25L (4.5 quarts)
Engine coolant*	Motorcraft Premium Engine Coolant (green-colored) or Motorcraft Premium Gold Engine Coolant (yellow-colored)	5.75L (6.1 quarts)
Power steering fluid	Motorcraft MERCON ATF	Fill to line on reservoir 0.9L (0.95 quarts)
Fuel tank	N/A	50L (13.2 gallons)
Transaxle fluid**	Motorcraft Full Synthetic Manual Transmission Fluid	2.0L (2.1 quarts)
Windshield washer fluid	Ultra-Clear Windshield Washer Concentrate	4.0L (4.2 quarts)

* Add the coolant type originally equipped in your vehicle

** Service refill capacity is determined by filling the transmission to the bottom of the filler hole with the vehicle on a level surface

MAINTENANCE

OCTANE RECOMMENDATIONS

Your vehicle is designed to use “Premium” unleaded gasoline with an (R+M)/2 octane rating of 91 or higher. The use of gasolines with lower octane ratings may damage the engine. Gasolines labeled as “Premium” in high altitude areas that are sold with octane ratings of less than 91 are not recommended.

If your engine knocks under any driving conditions while you are using fuel with the recommended octane rating, see your dealer or a qualified service technician to prevent any engine damage.



SYNTHETIC FLUIDS

There are no synthetic fluids or break-in fluids in your SVT Focus engine when it leaves the factory. Note that SVT does not make recommendations about the use of synthetic oils in your engine. Should you decide to use synthetic engine oil, we recommend you allow 4,000 to 6,000 miles (6,500 km to 9,600 km) in order to assure complete break-in before switching to synthetic oil.

MAINTENANCE AND BREAK-IN

For complete maintenance and break-in procedure information, please refer to your ***Focus Owner's Guide***.

A Word about Warranty Coverage

A WORD ABOUT WARRANTY COVERAGE

The SVT Focus carries the same warranty coverage as other Ford Focus models. This information is covered in its entirety in the Ford Motor Company Warranty Guide.

The SVT Focus or any SVT vehicle can be serviced under warranty at any Ford-Lincoln-Mercury dealer nationwide.

SVT does not recommend modifying or racing our vehicles, as they are designed and built to be driven as delivered from the factory. The Ford Motor Company Warranty Guide discusses the installation of aftermarket parts and their effect on warranty coverage as follows:

Repairs are not reimbursable under warranty when:

- “The repairs are required because of abuse, misuse, racing, fire, negligence, accident, modification or a natural disaster.”
- “The repairs are required due to installation of a non-Ford part.”