

MULTI-FUNCTION LEVER

Rotate the end of the control to increase/decrease the speed of the wipers.

Push the end of the stalk:

- quickly for a single swipe without fluid
- and hold briefly for three swipes with washer fluid
- and hold for a longer wash cycle

Note: A courtesy wipe will automatically occur after the washing cycle to ensure that any drips have been cleared from your windshield. For optimal wiper performance, clean blades and glass regularly. Refer to your Owner's Guide for more information.

HEADLAMP CONTROL

○ Turns the headlamps off.

P² Turns on parking, instrument panel, license plate and tail lamps.

☉ Turns on headlamps.

☼ Autolamps (if equipped): Automatically turns the exterior lamps on/off based on available daylight.

☼ Pull toward you to turn on the fog lamps (if equipped).

Note: Your vehicle is equipped with automatic instrumentation illumination. When the headlamps or park lamps are turned on, a light sensor in your vehicle monitors the outside lighting conditions and automatically sets the instrumentation illumination to the appropriate mode. Refer to your Owner's Guide for further information.

NAVIGATION SYSTEM (IF EQUIPPED)

The Mobile Media Navigation System allows you to record CDs, listen to your saved music, play DVDs and access climate control options in addition to navigating the vehicle. Refer to your Navigation supplement for more information.

Use extreme caution when using any device or feature that may take your attention off the road. Ford recommends against the use of any hand-held device while driving and that you comply with all applicable laws. Your primary responsibility is the safe operation of the vehicle.

LOW TIRE PRESSURE WARNING LIGHT

Refer to the Tire Pressure section on the Essential Information panel of this guide for more information.

STEERING WHEEL CONTROLS (IF EQUIPPED)

To set the speed:

- 1 Press ON.
- 2 Accelerate to the desired speed.
- 3 Press SET + and take your foot off the accelerator.

- To set a higher speed, press and hold SET + or press SET + repeatedly until the desired speed is reached.
- To set a lower speed, press and hold SET - or press SET - repeatedly until the desired speed is reached.
- To return to a previously set speed, press RESUME.
- To turn off, press OFF or turn off the ignition.

VOL +/-: Press to increase/decrease volume levels.

◀▶: Press to access the previous/next radio station, CD track or preset satellite radio channel.

🎵: Press repeatedly to access all possible media sources.

🗣️: Press to access SYNC® voice recognition, if equipped.

📞: Press to access SYNC® phone features, if equipped.

MESSAGE CENTER

Displays important vehicle information through a constant monitoring of vehicle systems.

The system will notify you of potential problems with a display of warnings followed by a long indicator chime. Use the INFO, SETUP and RESET buttons to access various menus and settings within the message center such as MyColor® ambient lighting and halo lighting. Refer to your Owner's Guide for more information.

INTERIOR TRUNK RELEASE

HAZARD FLASHER

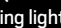
ADVANCETRAC® STABILITY ENHANCEMENT SYSTEM

Helps you maintain stability and steerability of your vehicle during a variety of road conditions. If your vehicle becomes stuck, try turning off the Traction Control portion of the AdvanceTrac® system (by pressing the control once) to allow wheel spin and help increase momentum to help dig the vehicle out. This control also enables other AdvanceTrac® modes, please refer to your Owner's Guide for more information.

Sport Mode (if equipped):

Allows for more spirited driving (closer to the vehicle's handling limits) before the AdvanceTrac® system intervenes. To activate, press the brake pedal and then press the control twice rapidly. Sport mode is intended for use in controlled racing environments as it provides less AdvanceTrac® intervention and should only be used by experienced drivers in a controlled and safe manner. Always be familiar with the vehicle and the conditions before selecting this mode. Refer to your Owner's Guide for more information.

ABS WARNING LIGHT

Illuminates briefly when the ignition is turned on. If the light remains on or continues to flash, a malfunction has been detected. Contact your authorized dealer as soon as possible and have the system serviced. Normal braking (less ABS) is still functional unless the brake warning light  is also illuminated.

SERVICE ENGINE SOON LIGHT

Illuminates briefly when the ignition is turned on. If it remains on or is blinking after the engine is started, the on-board diagnostics system (OBD-II) has detected a malfunction. Drive in a moderate fashion and contact your authorized dealer as soon as possible.

AIRBAG READINESS LIGHT

Illuminates briefly when the ignition is turned on. If this light fails to illuminate, remains on or continues to flash after the engine is started, contact your authorized dealer for service as soon as possible. A chime will also sound if there is a malfunction in the indicator light.

THROTTLE CONTROL/ TRANSMISSION LIGHT

Illuminates when a powertrain fault is detected. If the light remains on or continues to come on, contact your authorized dealer for service as soon as possible.

MANUAL HEATING AND AIR CONDITIONING SYSTEM

Refer to the Climate Control chapter in your Owner's Guide for more information.

MANUAL TRANSMISSION

The gearshift lever can only be moved to R (Reverse) by pushing the knob down before shifting to reverse. This is a lockout feature which protects the transmission from accidentally engaging R (Reverse) when intending to select 1 (First).

CLIMATE CONTROLS



NAVIGATION BASED DUAL ZONE AUTOMATIC TEMPERATURE CONTROL (IF EQUIPPED)

HEATED DRIVER/PASSENGER SEATS • 1

Press to activate heated seats, press again to deactivate.

DRIVER SIDE TEMPERATURE • 2

Press to increase/decrease the air temperature for the driver side of the vehicle. If the passenger side controls (dual zone) are not active, this control adjusts the temperature for the entire vehicle cabin (single zone).

☼ • 3 Press to turn on/off.

AUTO • 4

Press to engage full automatic operation. Select the desired temperature using the temperature control. The system will automatically determine fan speed, airflow location, A/C on or off, and outside or recirculated air, to heat or cool the vehicle to reach the desired temperature.

DEFROST • 5

Distributes outside air through the windshield defroster and demister vents. Can be used to clear thin ice or fog from the windshield.

FAN SPEED • 6

Press + to increase or - to decrease the fan speed.

REAR DEFROST • 7

Press to activate and clear the rear window and side heated mirrors of thin ice and fog. Press again to deactivate. The defroster will turn off automatically after 15 minutes.

A/C • 8

Press to activate/deactivate. Use with recirculated air to improve cooling performance efficiency.

RECIRCULATED AIR • 9

Recirculated air may reduce the amount of time needed to cool down the interior of the vehicle and may also help reduce undesirable odors from reaching the interior of the vehicle.

PASSENGER SIDE TEMPERATURE • 10

Press to activate passenger side climate control (dual zone) and to increase/decrease temperature on the passenger side.

CLIMATE • 11

Press to access climate control features on the navigation touchscreen. Refer to your Owner's Guide and/or Navigation supplement for more information.

Note: Fuel economy can be affected by climate control usage. Using MAX A/C helps improve fuel economy as it "re-cools" recirculated air and is more economical and efficient. Press the CLIMATE hard button and then press MAX A/C on the touchscreen.

AUDIO CONTROLS



TO SET THE TIME:
Press CLOCK. Use the memory preset #s to enter the desired time and press OK.

IN-DASH CD/MP3 SATELLITE COMPATIBLE SOUND SYSTEM (IF EQUIPPED)

VOL • 1

Push to turn the system on/off. Turn to increase/decrease the volume.

CD • 2

Press to enter CD/MP3 mode. If a disc is already present in the system, CD play will begin where it last ended.

AM/FM • 3

Press repeatedly to cycle through AM, FM1 or FM2 frequency bands.

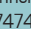

SIRIUS • 4

Press repeatedly to cycle through SAT1, SAT2 and SAT3 (satellite radio modes, if equipped). Press MENU when active and then OK to enter the satellite radio menu and

DIRECT • 7

Press DIRECT and then, using the memory presets (0-9), enter in the

SOUND • 5

Press repeatedly to access: Bass, Treble, Balance, Fade, Speed compensated volume and All seats (Occupancy mode, if equipped). Press  SEEK  to make adjustments.

IN-DASH CD/MP3 SATELLITE COMPATIBLE SOUND SYSTEM (IF EQUIPPED)

access more options. Refer to your Owner's Guide for more information.

desired radio station, track number, MP3 folder number (if in MP3 mode), or satellite radio channel.

TUNE • 8

Turn to go to the next/previous satellite radio channel, or to go up/down the radio band frequency in individual increments.

SYNC® (IF EQUIPPED)

SYNC® is a hands-free communications and entertainment system with special phone and media features. For more information, please refer to the SYNC® Supplement, the SYNC® section in the Navigation Supplement (if equipped) or visit www.SyncMyRide.com.

Note: Your vehicle is equipped with an auxiliary input jack and possibly a USB port inside your center console. The auxiliary input jack allows you to plug in your portable MP3 player and play music through the vehicle speakers. The USB port (if equipped) allows you to plug in and access media devices. For more information, refer to your Owner's Guide.

SIRIUS® satellite radio broadcasts music, sports, news and entertainment programming. For more information and a complete list of SIRIUS® satellite radio channels, visit www.sirius.com in the United States, www.sirius-canada.ca in Canada, or call SIRIUS® at 1-888-539-7474. Satellite radio is only available with a valid SIRIUS® radio subscription.

This Quick Reference Guide is not intended to replace your vehicle Owner's Guide which contains more detailed information concerning the features of your vehicle, as well as important safety warnings designed to help reduce the risk of injury to you and your passengers. Please read your entire Owner's Guide carefully as you begin learning about your new vehicle and refer to the appropriate sections when questions arise.

All information contained in this Quick Reference Guide was accurate at the time of duplication. We reserve the right to change features, operation and/or functionality of any vehicle specification at any time. Your Ford dealer is the best source for the most current information. For detailed operating and safety information, please consult your Owner's Guide.

Ford Motor Company | Customer Relationship Center | P.O. Box 6248 | Dearborn, MI 48121
1-800-392-3673 (FORD) | (TDD for the hearing impaired: 1-800-232-5952)
www.fordowner.com | www.ford.ca



CONVERTIBLE (IF EQUIPPED)

Do not store articles behind rear seat. Articles stored in the convertible top stowage compartment may break the rear glass window when the top is lowered. The convertible top can be lowered with the side windows down. The windows automatically lower when lowering or raising the top. Do not lower the top when the top material is wet. **Note:** The convertible top will not operate unless the vehicle is traveling under 3 mph (5 km/h).

TO LOWER THE CONVERTIBLE TOP

1 Stop the vehicle completely. Turn the key to the on position. It is recommended that the engine is running to prevent draining the battery. **2** Ensure the convertible top stowage compartment behind the rear seat is empty and ready to receive the top.

Check the convertible top outer surface to ensure it is free of leaves and debris.

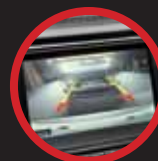
3 Unclasp the top from the windshield header at both the right and left sides by pulling each handle down and rearward until the handle clears the windshield header. **Note:** If the top has not been lowered for a while and sticks to the windshield header, push the front of the top up slightly with your hand to loosen it. **4** Push the convertible top switch on the overhead console and hold until the windows are completely down and the top is completely stored.

TO RAISE THE CONVERTIBLE TOP

1 Stop the vehicle completely. Turn the key to the on position. It is recommended that the engine is running to prevent draining the battery. **2** Push and hold the convertible top switch until the windows

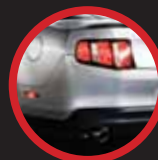
lower completely and the top unfolds and moves forward toward the windshield header. **3** Open both handles before the top meets the windshield header. **4** Continue to use the convertible top switch to raise the top until it has reached the fully closed position flush to the header. The two pins under the forward edge of the top should seat in the matching holes in the header. **5** Secure the driver's side latch first, then secure the passenger's side. Pull down firmly on the latch handles before rotating them into the windshield header until they reach the full forward position. Pulling down on the latch handles and at the center grip in the header will make it easier to fasten the top. Push the latch handles up into the stowed position once the latch is rotated into the full forward position. **6** Raise the rear windows first and then raise the front windows.

CONVERTIBLE TOP



REARVIEW CAMERA (IF EQUIPPED)

This system provides a visual display of the area behind the vehicle. The display automatically appears on the navigation screen (if equipped) or in the rearview mirror when the vehicle is in Reverse (R) and uses colors (green, yellow and red) to help judge your proximity to objects. **Note:** Visibility aids do not replace the need to watch where the vehicle is moving. Refer to your Owner's Guide for safety information, more detail and limitations.



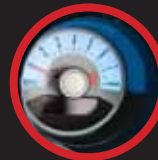
REVERSE SENSING SYSTEM (IF EQUIPPED)

This system sounds a warning tone if there is an obstacle near the vehicle's rear bumper when the vehicle is in R (Reverse) and is traveling less than 3 mph (5km/h). The warning tone will increase in frequency as the object gets closer and then will sound continuously when the object is less than 10 inches away. **Note:** Visibility aids do not replace the need to watch where the vehicle is moving. Refer to your Owner's Guide for safety information, more detail and limitations.



INTEGRATED KEYHEAD TRANSMITTER (IKT)

- Press once to lock all doors. Press again to confirm all doors are closed.
- Press once to unlock the driver's door. Press again within five seconds to unlock all doors.
- Press to activate the panic alarm. Press again or turn the ignition on to deactivate.
- Press twice to open the trunk.
- Car finder: Press twice within three seconds to locate your vehicle. The horn will chirp and the turn lamps will flash.



ACCESSING AND ADJUSTING GAUGE COLOR, AMBIENT COLOR, HALO COLOR AND MYCOLOR®

Your Mustang is equipped with a very unique message center which allows you to select specific colors to backlight your gauges (Gauge color) the area around your gauges (Halo color) as well as selecting ambient lighting options to appear in the footwell areas, cupholders and console bin (Ambient color). To access, first ensure that your vehicle is in P (Park). Press SETUP repeatedly until the desired feature (GAUGE COLOR, AMBIENT COLOR or HALO COLOR) appears in the display. Press RESET repeatedly to scroll through all possible color options as well as MyColor®. (**Note:** Ensure that Ambient light is set to ON.)

MyColor® allows you to create your own color preference by adjusting the levels of the three primary colors (blue, red and green). You can save up to three custom colors. To set MyColor®, press SETUP repeatedly until the desired category for which you want to create a unique color appears (Gauge color, Ambient color or Halo color). Press RESET until MyColor® appears in the display. Then, press and hold RESET for three seconds. Now, press SETUP repeatedly to scroll through Red (R), Green (G), Blue (B) and Exit. When the desired color is in the display, press RESET to adjust the level of color. Press SETUP again to mix with any other colors.

ADDITIONAL FEATURES

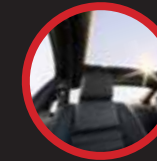


MyKey™

Allows you to program certain driving restrictions on any standard key in order to promote good driving habits. When MyKey™ is programmed:

- Belt-minder® cannot be disabled and will sound continuously and the audio will be muted until the driver's and front passenger's safety belt is buckled.
- Audible and visual low fuel warnings are displayed.
- Certain features cannot be turned off such as the reverse sensing system.
- Audio volume and vehicle speed can be limited.
- Audible and visual speed warnings can be configured at preselected speeds
- AdvanceTrac® cannot be programmed off

For complete information, refer to MyKey™ in the Locks and Security chapter in your Owner's Guide.



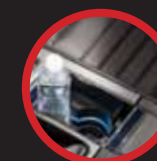
GLASS ROOF AND ROLLER BLIND SUNSHADE (IF EQUIPPED)

Use the center mounted handle to slide the shade open or closed.



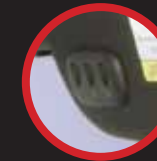
REAR SEATS/HEAD RESTRAINTS

Your vehicle is equipped with second row outboard non-adjustable head restraints. The head restraints can be rotated forward to improve rear vision when there are no rear occupants.



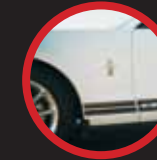
CONSOLE LOCK

For added security, you can lock/unlock your center console using your ignition key. After unlocking, press the latch to open.



CAR2U® (IF EQUIPPED)

Car2U® is a universal transmitter located on the driver's visor. This system has two primary features – a garage door opener and a platform for remote activation of devices in your home. This system's garage door opener function replaces the common hand held garage door opener with a three button transmitter. For more information, refer to Car2U® in the Driver Controls chapter of your Owner's Guide.



CLEANING

When washing your vehicle, do not use a commercial or high pressure wand to wash striped surfaces.

ESSENTIAL INFORMATION

EASY FUEL™ SYSTEM

With this system, you simply open the fuel filler door, insert the nozzle and begin fueling. It is self sealing and therefore protected against dust, dirt, water, snow and ice. With the Easy Fuel™ system, wait five seconds from the time the refueling nozzle is shut-off until the nozzle is pulled back out of the fill pipe to allow residual fuel in the nozzle to drain into the tank. To use a portable fuel container, slowly insert the fuel funnel (located with the tire changing tools or the temporary mobility kit), and pour the fuel into the funnel. When done, clean the funnel or properly dispose of it. Extra funnels can be purchased from your authorized dealer. **Do not** use aftermarket funnels as they will not work with the Easy Fuel™ system and may cause damage.

FUEL TANK CAPACITY/FUEL INFO

Your fuel tank capacity is 16.0 gallons (60.6L). Your vehicle is designed to use "Regular" unleaded gasoline with an octane rating of 87. Do not use E85 fuels because your vehicle was not designed to run on fuels with more than 10% ethanol.

LOCATION OF SPARE TIRE AND TOOLS

Your vehicle is either equipped with a temporary spare tire or a **temporary mobility kit**, both of which are located in the trunk. The kit contains an air compressor to re-inflate the tire and a sealing compound that will seal most punctures caused by nails or similar objects. Do not attempt to repair large punctures or damage to the tire's sidewall. The mobility kit provides a temporary seal allowing you to drive up to 120 miles at a maximum speed of 50 mph. After sealant use, the TPMS sensor and valve stem on the wheel must be replaced by an authorized Ford dealer. **Note:** The sealant in the canister is to be used for one tire only. See your authorized dealer for replacement canisters. For complete information refer to your Owner's Guide.

ROADSIDE ASSISTANCE

Your new Ford Mustang comes with the assurance and support of 24-hour emergency roadside assistance. Roadside assistance includes such services as: lockout assistance, limited fuel delivery, battery jump starts, changing a flat tire, towing, and winch out. To receive roadside assistance in the United States, call 1 (800) 241-3673. In Canada, call 1 (800) 665-2006.

TIRE PRESSURE

Check your tire pressure at least once a month and before long trips (including spare, if equipped). The recommended specifications are on the Safety Compliance Certification Label or Tire Label located on the B-Pillar or the edge of the driver's door. As an added safety feature, your vehicle has been equipped with a **Tire Pressure Monitoring System (TPMS)** that illuminates when

one or more of your tires are significantly under-inflated. If the low tire pressure warning light remains on at start up or while driving, stop and check your tires as soon as possible and ensure that they are inflated to the proper pressure. If the light flashes for approximately one minute and then remains on, a malfunction has been detected in the TPMS system. Contact your authorized dealer as soon as possible for service. For more information on TPMS, refer to Tire Pressure Monitoring System (TPMS) in the Tires, Wheels and Loading chapter in your Owner's Guide.

SOS POST-CRASH ALERT SYSTEM™

This system provides audible and visual alarms when a crash causes the deployment of airbags or the activation of the safety belt pretensioners. The turn signals will flash and the horn will sound. To deactivate, press the hazard flasher control, or on your remote transmitter.



2012 MUSTANG Quick Reference Guide



CR3J 19G217 AA

December 2010
First Printing
Quick Reference Guide
Mustang
Litho in U.S.A.

