

# 6.7L DIESEL—STOP SAFELY NOW INSTRUMENT MESSAGE—MALFUNCTION INDICATOR LAMP (MIL) ON WITH DIAGNOSTIC TROUBLE CODES (DTC) P200E AND P200C

TSB 12-7-1

## FORD:

2011-2012 F-Super Duty

## ISSUE

Some 2011-2012 F-Super Duty vehicles equipped with a 6.7L diesel engine may exhibit a Stop Safely Now instrument cluster message with the MIL on with DTCs P200E and P200C. DTCs P2471, P2479, P242D and P247B may or may not be stored in the powertrain control module (PCM) continuous memory.

## ACTION

Follow the Service Procedure steps to correct the condition.

## SERVICE PROCEDURE

1. Using the Integrated Diagnostic System (IDS) or equivalent scan tool, retrieve all continuous memory DTCs. Are DTCs P200E and P200C present with or without DTCs P2471, P2479, P242D and P247B?
  - a. No - this article does not apply. Refer to the Powertrain Control/Emissions Diagnosis (PC/ED) manual for normal diagnosis.
  - b. Yes - proceed to Step 2.
2. Obtain the exhaust gas temperature (EGT) readings from freeze frame data when DTCs P200E or P200C were set. (Figure 1)
  - a. If one EGT sensor is reading 850 °C (1562 °F) or higher, replace that sensor. Refer to Workshop Manual, Section 303-14B.
  - b. If two or more EGT sensors are reading 850 °C (1562 °F) or higher, this article does not apply. Refer to PC/ED manual pinpoint test RC to diagnose the concern. EGT locations are different for chassis cab (narrow frame and pickup truck (wide frame). (Figure 2)

PART NUMBER	PART NAME
AC3Z-5J213-A	EGT Sensor

**WARRANTY STATUS:** Eligible Under Provisions Of New Vehicle Limited Warranty Coverage And Emissions Warranty Coverage  
Warranty/ESP coverage limits/policies/prior approvals are not altered by a TSB. Warranty/ESP coverage limits are determined by the identified causal part and verified using the OASIS part coverage tool.

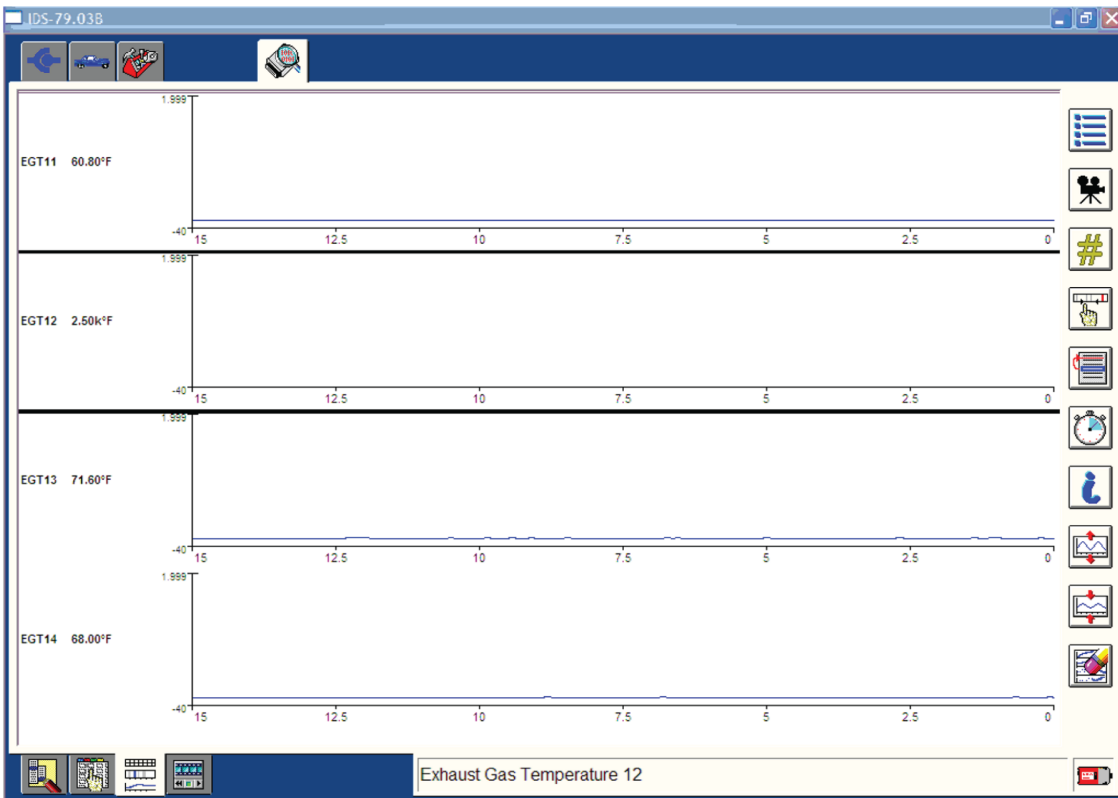
OPERATION	DESCRIPTION	TIME
120701A	2011-2012 F-Super Duty 6.7L: Diagnose, And Replace One (1) EGT Sensor (Do Not Use With Any Other Labor Operations)	0.5 Hr.

## DEALER CODING

BASIC PART NO.  
5J213

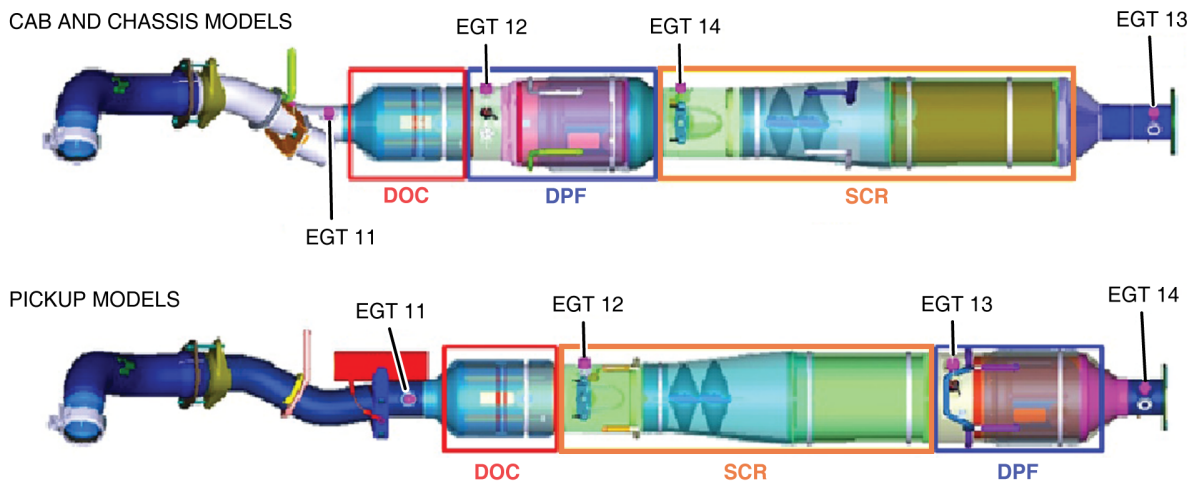
CONDITION  
CODE  
42

**NOTE:** The information in Technical Service Bulletins is intended for use by trained, professional technicians with the knowledge, tools, and equipment to do the job properly and safely. It informs these technicians of conditions that may occur on some vehicles, or provides information that could assist in proper vehicle service. The procedures should not be performed by "do-it-yourselfers". Do not assume that a condition described affects your car or truck. Contact a Ford or Lincoln dealership to determine whether the Bulletin applies to your vehicle. Warranty Policy and Extended Service Plan documentation determine Warranty and/or Extended Service Plan coverage unless stated otherwise in the TSB article. The information in this Technical Service Bulletin (TSB) was current at the time of printing. Ford Motor Company reserves the right to supersede this information with updates. The most recent information is available through Ford Motor Company's on-line technical resources.



TB10317A

Figure 1 - Article 12-7-1



TB10318A

Figure 2 - Article 12-7-1