
IDS Calibration & Software Update Process



Index

- 2. Manual Software Update
- 9. Verify IDS Software Level
- 10. Download Calibration files
- 12. Download Software Updates



Manual Software Update

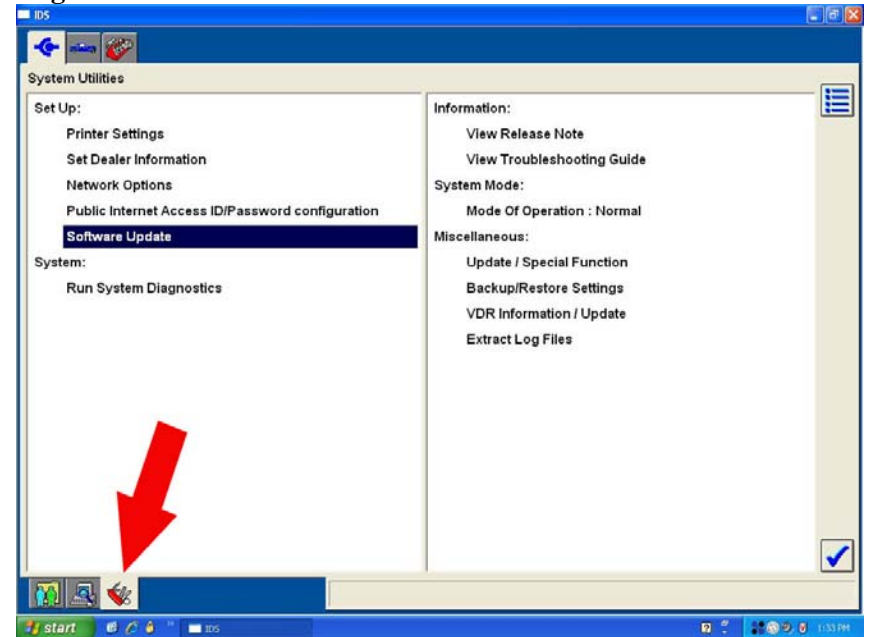
1. Press the **IDS Tab** in the upper left corner of the screen. Figure 1.

Figure 1



2. Press the **System Utilities** tab in the lower left corner. Figure 2. (*The software update process will change beginning with release 60 to the following steps*).

Figure 2



3. Your computer must be network activated and have an Internet connection to receive automatic notification of updates.
To activate: System Utilities->Network Options ->Activate

4. Select "Software Update" and click the blue tick. A software update popup will be displayed. Click the green tick to continue.

Figure 3

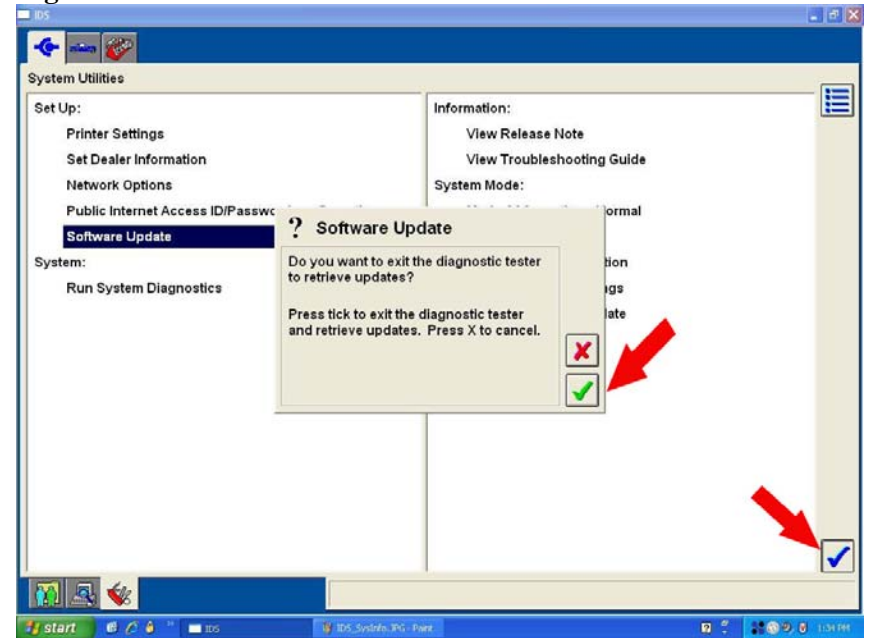
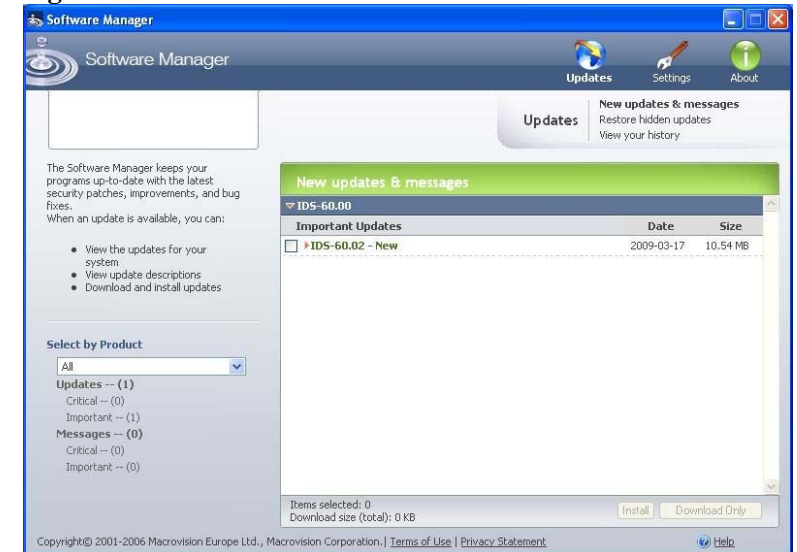


Figure 4



5. If updates are available, the Software Manager will display them under "Important Updates". Database and patch updates will be included in a single software update.

6. Selecting the software update will enable the "Install" and "Download Only" buttons. Click on "Install" to start the installation process or "Download Only" to save the update to PC. Shown in Figure 5 and 6.

Figure 5

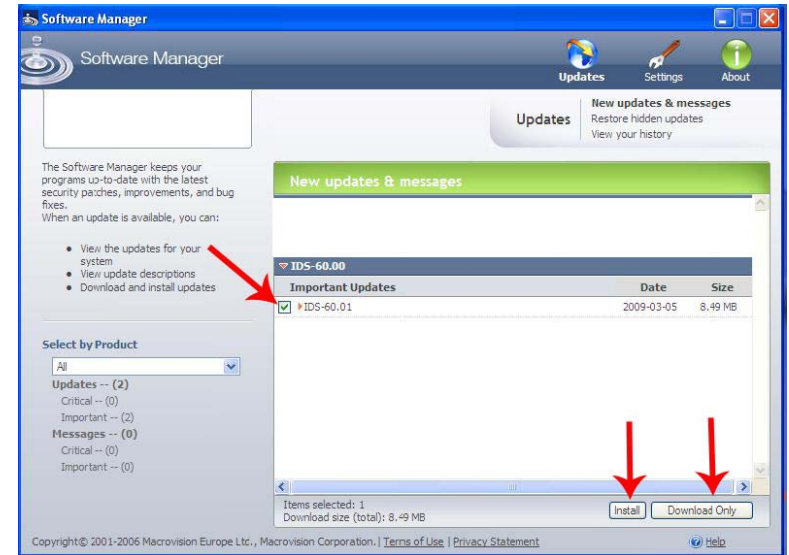
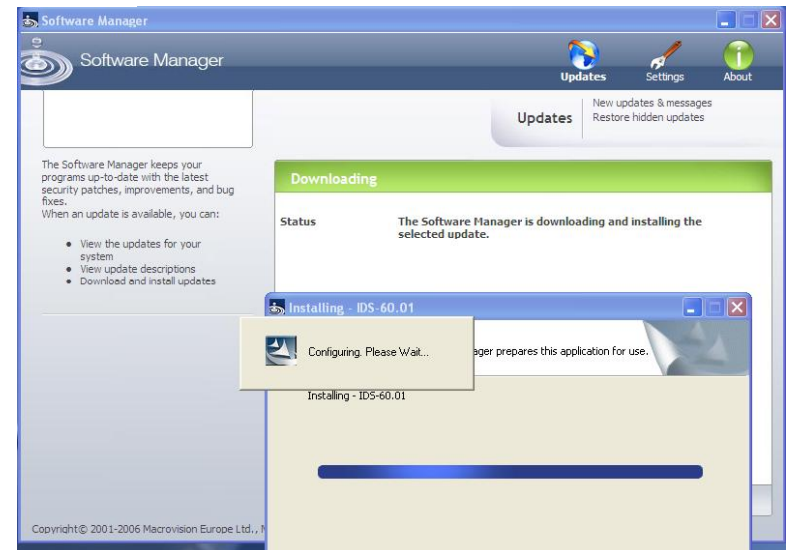
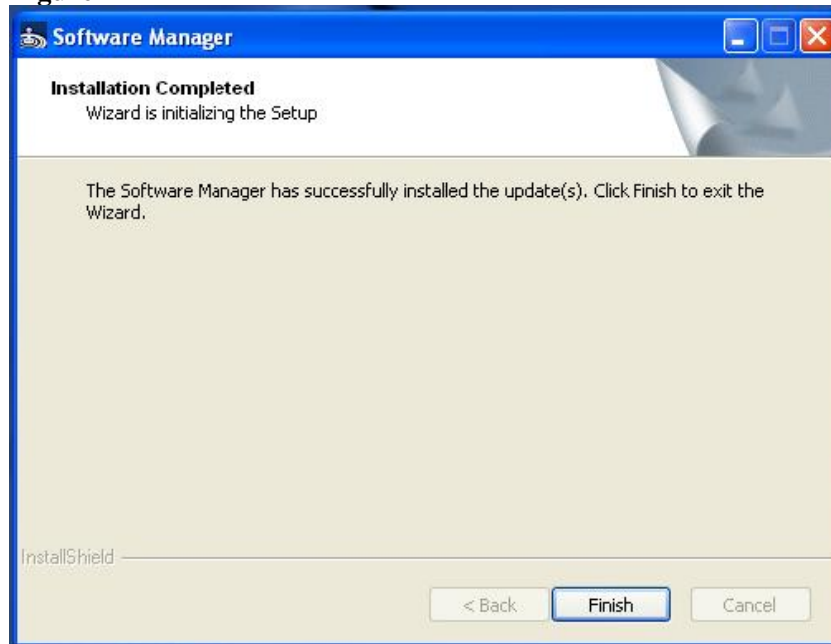


Figure 6



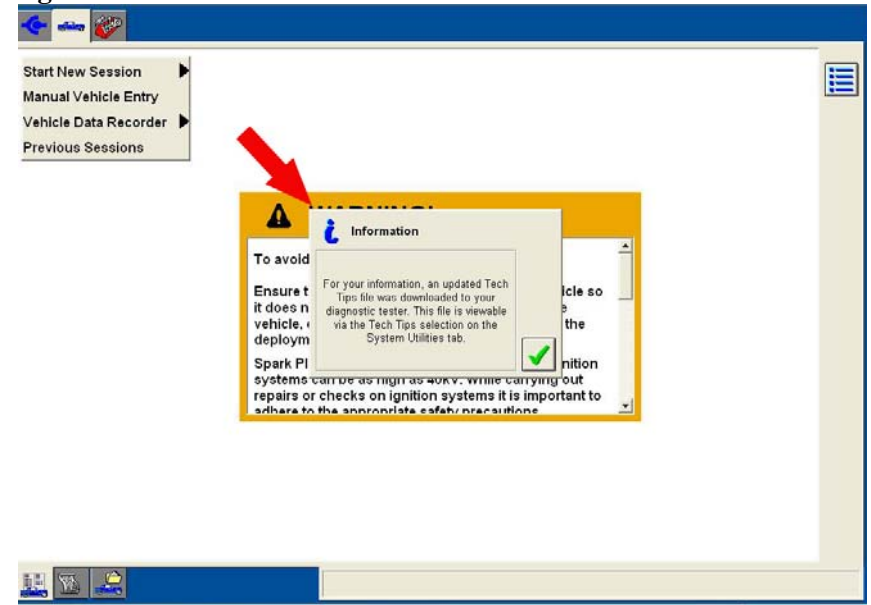
7. Once the software update installation is complete, the screen shown in Figure 7 will appear. Click "Finish" to complete the process.

Figure 7



7. Once the software update is complete, you must restart IDS. If Tech Tip updates are available the "Information" popup shown in Figure 8 will appear.

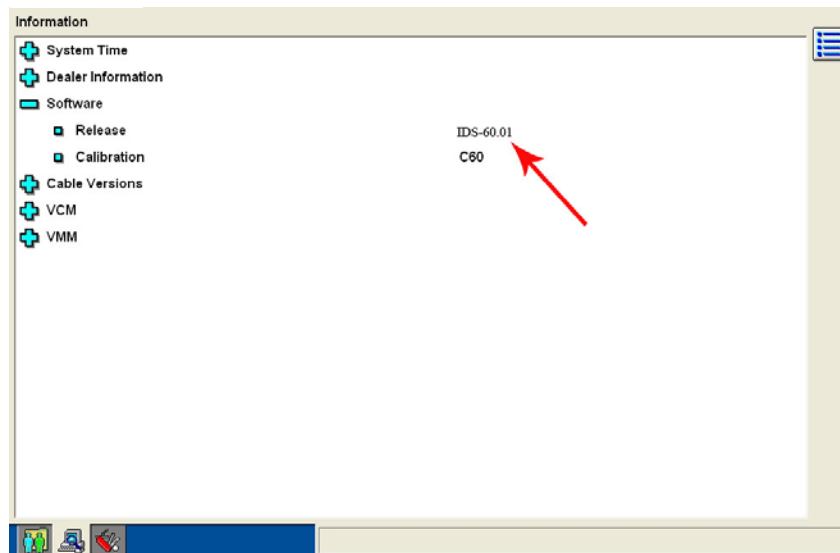
Figure 8



Verify IDS Software Level

The system information page will display the software release level. In this example IDS software release is at IDS-60.01.

Figure 1



Download Calibration Files

1. <http://www.fmdealer.com> > PTS (Professional Technician Society) website > Rotunda > Rotunda Diagnostic > IDS > Module Reprogramming (see Page 4. Figure 1). Enter the Calibration file name. For example, if IDS states file **abcdefg.bin**, enter “**abcdefg** then click on the download button.

OR

2. Visit <http://www.motorcraftservice.com> > Diagnostic Tool Support > IDS > Module Reprogramming. Enter the Calibration for Figure 1 example, IDS states file **abcdefg.bin**, enter “**abcdefg** then click on the download button.
3. Download the file to either a USB key/drive or CD ROM.
4. Copy the file from the removable media to C:\Program Files\Ford Motor Company\Calibration files directory.
5. If the IDS laptop has an internet connection, download the file(s) directly to C:\Program Files\Ford Motor Company\Calibration files directory.

Figure 1

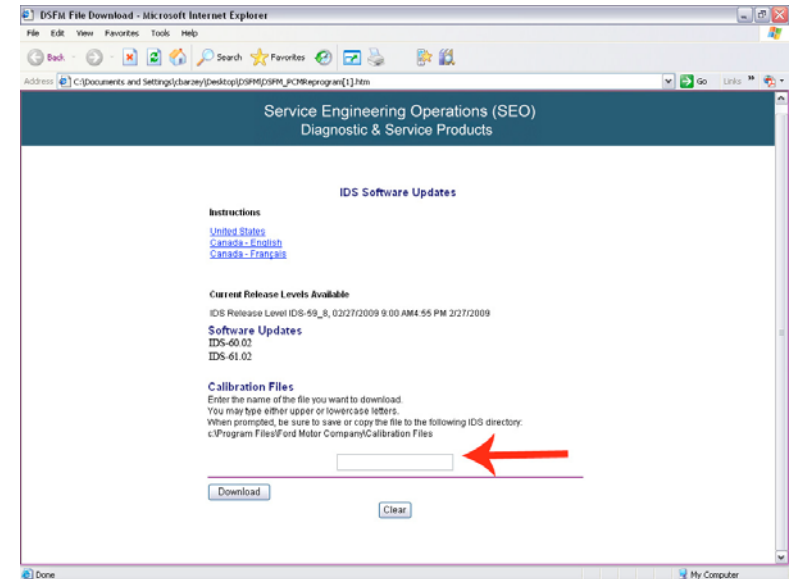
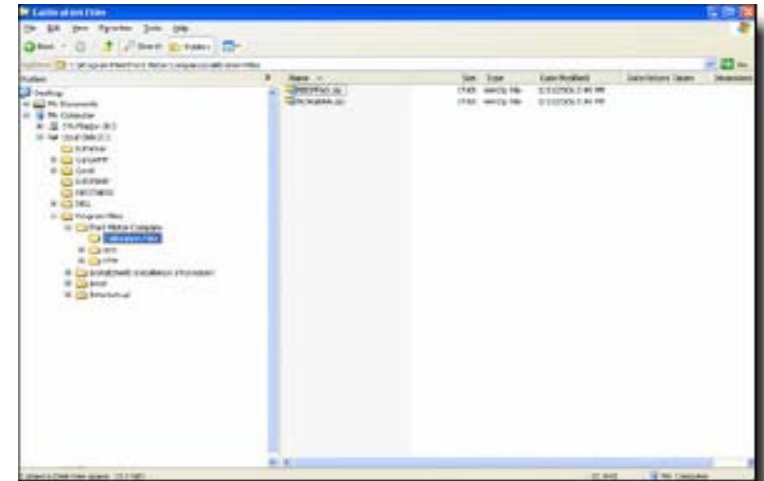


Figure 2



Download Software Updates

1. Click on Software Update file as shown in Figure 1 then **"Save"**. Save the file(s) to a USB key/drive or CD ROM.
2. The file will be in .exe format. Run the .exe file to perform the Software Update (**IDS should be closed**).

Verifying Software Update

3. Navigate back to **"System Information"**. IDS will show the software release. Shown in Figure 2, the software release level is updated to IDS-60.02.

Figure 1

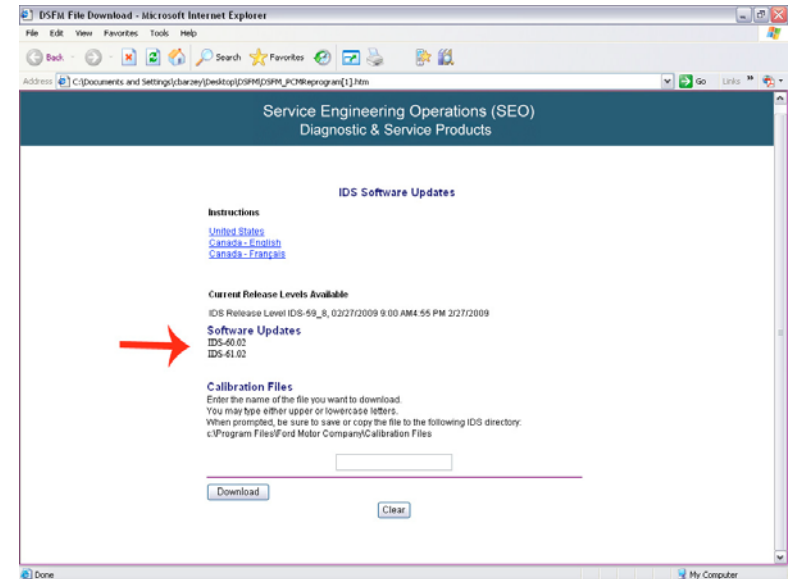
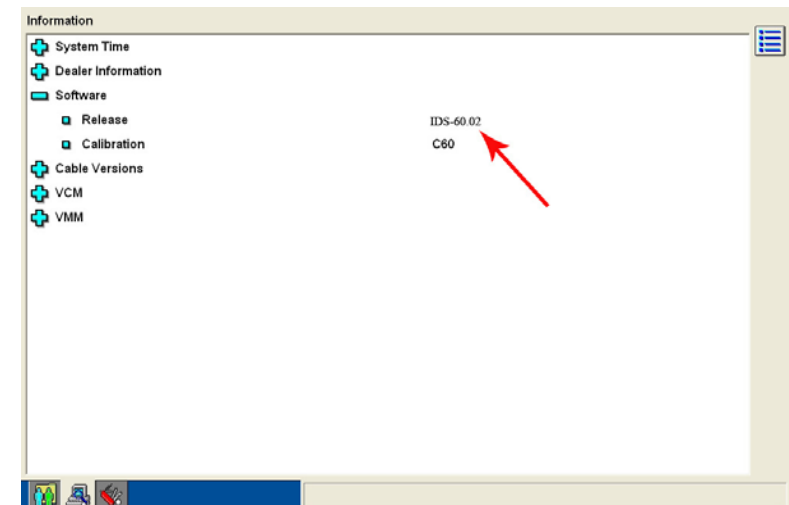


Figure 2



IDS Software Updates

Trademark Acknowledgements

Ford is a registered trademark of Ford Motor Company.

Copyright Information

IDS Software Updates

©2009 Ford Motor Company. All rights reserved

The information, specifications and illustrations in this manual are based on the latest information available at the time of printing. **Ford Motor Company** reserves the right to make changes at any time without notice.