

This Quick Reference Guide is not intended to replace your vehicle Owner's Guide which contains more detailed information concerning the features of your vehicle, as well as important safety warnings designed to help reduce the risk of injury to you and your passengers. Please read your entire Owner's Guide carefully as you begin learning about your new vehicle and refer to the appropriate sections when questions arise.

All information contained in this Quick Reference Guide was accurate at the time of duplication. We reserve the right to change features, operation and/or functionality of any vehicle specification at any time. Your Ford dealer is the best source for the most current information. For detailed operating and safety information, please consult your Owner's Guide.

Ford Motor Company | Customer Relationship Center | P.O. Box 6248 | Dearborn, MI 48121  
1-800-392-3673 (FORD) | (TDD for the hearing impaired: 1-800-232-5952)



#### FUSES

If your electrical components aren't working properly, a fuse may have blown. For more detailed information, please refer to your Owner's Guide.

#### FUEL PUMP SHUT-OFF SWITCH

This device stops the electric fuel pump from sending fuel to the engine when your vehicle has had a substantial jolt. After an accident, if the engine cranks but does not start, this switch may have been activated. The fuel pump shut-off switch is located in the driver's footwell, by the hood release.

#### CHANGING THE TIRES

Your vehicle is equipped with a temporary spare tire, which is smaller than a regular tire and designed for emergency use only. The jack, spare tire, jack handle and the lug nut wrench are located in the wheel well underneath the trunk floor.

#### TIRE PRESSURE

Safe operation of your Mustang requires your tires be properly inflated. The Ford recommended inflation pressure is found on the tire label or the certification label on the driver's door. At least once a month and

before long trips, inspect each tire and check the air pressure with a tire gauge. Don't forget the spare. Air pressure should be checked when the tires are cold. Inflate all tires to the inflation pressure recommended by Ford Motor Company.

#### FUEL TANK CAPACITY

Your tank holds 16 gallons (60.6 L) of fuel. For optimum performance use "Regular" unleaded fuel with a pump (R+M)/2 octane rating of at least 87.

#### ROADSIDE ASSISTANCE

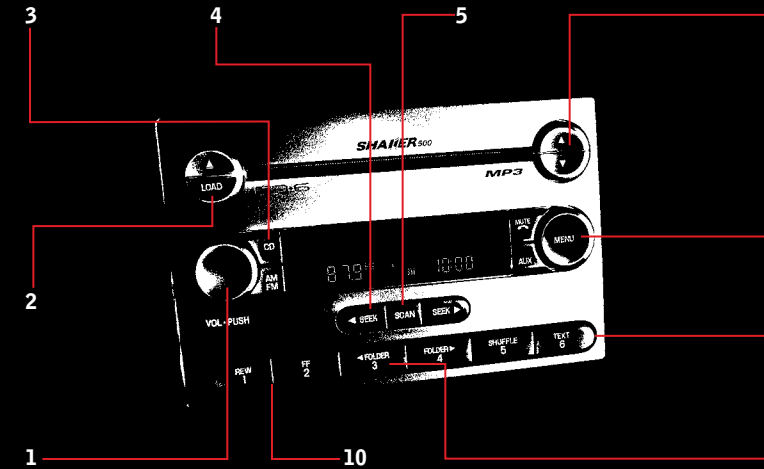
In addition to your New Vehicle Limited Warranty, Ford provides new vehicle owners with a complimentary roadside assistance program. This service is available 24 hours, seven days a week for three years or 36,000 miles (60,000 km). It covers changing a flat tire, jump starts, limited fuel delivery, lockout assistance and towing of your vehicle.

#### FORD MUSTANG

#### OCTOBER 2005

#### SECOND PRINTING

#### QUICK REFERENCE GUIDE



#### 1 POWER / VOLUME

Press to turn ON or OFF. Turn to increase or decrease volume. If the volume is set above a certain level and the ignition is turned off, the volume will come back on at a "nominal" level when the ignition switch is turned back on.

#### 2 LOAD BUTTON (IF EQUIPPED)

Press to begin the CD load sequence. When the radio prompts to select a slot, use the preset button to select the desired slot to load the CD. When the radio prompts to load a CD, press and hold to auto load up to 6 CDs in sequence.

#### 3 CD BUTTON

Press to enter CD mode. If a CD is already loaded into the system, the CD play will begin where it last ended.

#### 4 SEEK BUTTONS

Press to access the previous or next strong station or track. Also use it in menu mode to select various settings.

#### 5 SCAN BUTTON

Press for a brief sampling of radio stations or CD tracks. Press again to stop scanning.

#### 6 UP/DOWN ARROWS

Press to manually move up or down the radio frequency. Also, use in menu mode to adjust the quality of different modes.

#### 7 MENU BUTTON

Use the MENU button to cycle through the possible modes (Bass, Treble, Fade, and Balance, among others). Then use SEEK or up/down arrows to adjust the setting. Fade adjusts audio between the front and rear speakers and Balance adjusts between left and right speakers.

#### 8 SETTING MEMORY PRESETS

To set a station, select frequency band AM / FM, tune to the desired station, then press and hold a preset button until sound returns.

#### 9 MP3 TRACK / FOLDER MODE

Available only on MP3 discs in CD mode. Press to go into MP3 folder mode. Press again to access previous / next folder.

#### 10 CD REWIND / FAST FORWARD

Press REW to manually reverse within a CD track. Press FF to manually advance within a CD track.



#### CONVERTIBLE (IF EQUIPPED)

Do not store articles behind rear seat. Articles stored in the convertible top stowage compartment may break the rear glass window when the top is lowered. The convertible top can be lowered with the windows down. The windows automatically lower when lowering or raising the top. Do not lower the top when the top material is wet. **NOTE** The convertible top will not operate unless the vehicle is traveling under 1.8 mph (3 km/h).

#### TO LOWER THE CONVERTIBLE TOP

**1** Stop the vehicle completely. Turn the key to the ON position. Recommended: Run the vehicle's engine when lowering or raising the top to prevent draining the battery. **2** Ensure the convertible top stowage compartment behind the rear seat is empty and ready to receive the top. Ensure the convertible top outer surface is free of leaves and debris. **3** Unclamp the top from the windshield header at both the right and left sides by pulling each handle down and rearward until the handle clears the windshield header. **NOTE** If the top has not been lowered for a while and sticks to the windshield header, push the front of the top up slightly with your hand to loosen it. **4** Push the convertible top switch on the overhead console and hold until the windows are completely down and the top is completely stored.

#### TO RAISE THE CONVERTIBLE TOP

**1** Stop the vehicle completely. Turn the key to the ON position. Recommended: Run the vehicle's engine when raising or lowering the top to prevent draining the battery. **2** Push and hold the convertible top switch until the windows lower completely and the top unfolds and moves forward toward the windshield header. **3** Open both handles before the top meets the windshield header. **4** Continue to use the convertible top switch to raise the top until it has reached the fully closed position flush to the header. The two pins under the forward edge of the top should seat in the matching holes in the header. **5** To fasten both handles securely, rotate the handles into the header on the top until they reach full forward and push up to flush the handle with the header. Pulling down on the header at the center grip while closing the handles may assist in fastening the top. **6** Raise the front and rear side windows.

#### POWER SIDE VIEW MIRRORS

Rotate the control clockwise to adjust the right mirror or counterclockwise to adjust the left mirror. Move the control in the direction you wish to tilt the mirror. Return the control to the center position to lock the mirrors in place.

#### POWER WINDOWS

Push or pull the rocker switches to open or close your windows. Push down and hold the switch to open. Pull up and hold the switch to close. Express Up allows the driver's and passenger's window to open and close fully without holding the control down. **Express Down:** Push the switch completely down to the second detent and release quickly. The window will open fully. **Express Up:** Pull the switch completely up to the second detent and release quickly. The window will automatically fully close. Momentarily press the switch to any position to stop window operation.

#### AUTOLOCK (IF EQUIPPED)

On automatic transmission vehicles, this feature automatically locks all vehicle doors when all doors are closed, the ignition is in the ON position, the brake is pressed before reaching 5 mph (8 km/h) and the vehicle speed increases to more than 5 mph (8 km/h). To enable or disable this feature, please refer to your Owner's Guide.

#### SMART UNLOCKING

When you open the door, lock the vehicle, and then close the door, the driver's door will automatically unlock, reminding you that your key is still in the ignition. For more information, please refer to your Owner's Guide.

#### SHORT DROP GLASS (FRONT WINDOWS ONLY)

In order to improve door efforts and sealing, your vehicle is equipped with short drop glass. This feature lowers the glass when either door is opened. The glass returns to its closed position when the door is closed. For more detailed information, please refer to your Owner's Guide.

#### REMOTE ENTRY SYSTEM

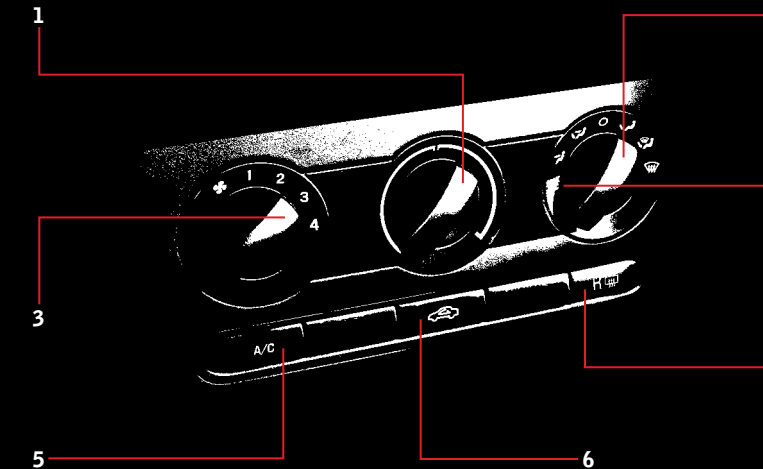
This feature allows you to lock or unlock the vehicle's doors without a key. It also allows you to release the trunk lid, activate a personal alarm, and arm or disarm the active anti-theft alarm system (if equipped). Note: The Panic function will only operate when the ignition is in the OFF / LOCK position; the trunk lid release function only operates when the vehicle speed is less than 3 mph (5 km/h). Up to four remote transmitters can be programmed to your vehicle.

#### ACTIVE ANTI-THEFT SYSTEM (IF EQUIPPED)

This system sounds the security horn and flashes the directional indicators when unauthorized entry or towing is detected. This system is armed whenever the vehicle is electronically locked and disarmed when the vehicle is electronically unlocked. For more detailed information, please refer to your Owner's Guide.

#### SEATBELT LOOP GUIDE

The belt guide improves access to the safety belt and access to the rear seat. Before fastening the safety belt, make sure the lower portion of the lap and shoulder belt passes underneath the belt guide at the bottom of the seatback. Pull the snaps apart to release the belt guide and move the lap and shoulder belt out of the way of passengers entering and exiting the rear seats. The belt guide is secured to the side shield by fastening the snap on the guide strap to the snap on the side shield. **1** Insert the belt tongue into the proper buckle (the buckle closest to the direction the tongue is coming from) until you hear a snap and feel it latch. Make sure the tongue is securely fastened in the buckle. **2** To unfasten, push the release button and remove the tongue from the buckle.



#### 1 TEMPERATURE CONTROL

Rotate the knob to adjust the temperature of the airflow in the vehicle.

#### 2 MODE SELECTOR

Controls the source of airflow into the vehicle. You can choose floor, instrument panel or windshield defroster air vents or combinations.

#### 3 FAN SPEED

Rotate the knob to adjust the volume of air circulated in the vehicle.

#### 4 MAX A/C

Distributes recirculated air through the instrument panel vents to cool the vehicle. This re-cooling of the interior air is more economical and efficient. Set the temperature knob to full cold position. Set to highest fan speed initially, then adjust to maintain comfort.

#### 5 A/C

Press to activate / deactivate air conditioning. Use with recirculated air to improve cooling performance. Engages automatically in MAX A/C, DEFROST and FLOOR / DEFROST.

#### 6 RECIRCULATED AIR CONTROL

Press to activate / deactivate recirculated air in the cabin. Recirculated air may reduce the amount of time required to cool down the interior of the vehicle and may also help reduce undesired exterior odors from reaching the interior of the vehicle. Recirculated air engages automatically in MAX A/C or can be engaged manually in any other mode, except defrost.

#### 7 REAR DEFROST AND DEFOGGING

Ensure that the ignition is in the ON position. Press the control to clear the rear window of thin ice and fog. The LED will illuminate. The rear defroster turns off automatically after 10 minutes or when the ignition is turned OFF. To manually turn off the rear defroster, push the control again.

#### REDUCING FOG BUILDUP

Place the airflow selector in the DEFROST or FLOOR / DEFROST position.

#### REDUCING HUMIDITY BUILDUP

Do not drive with the airflow selector in the OFF position or with recirculated air engaged.



#### MUSTANG QUICK REFERENCE GUIDE 2006

#### ESSENTIAL INFORMATION

#### AUDIO SYSTEMS

#### CONVERTIBLE TOP

#### ADDITIONAL FEATURES

#### CLIMATE CONTROL

How does it feel to own an American Classic?

Your 2006 Mustang is the newest member of a proud

family of legendary road machines. Years of

refinement and innovation have made your new

Mustang one of the most exciting, comfortable, and

smartest cars to ever roam the American road. This

Quick Reference Guide was designed to help you

get to know your new Mustang. Combined with the

accompanying CD-ROM, it will help you

quickly get to know many of your new Mustang's

features. For more detailed information, place the

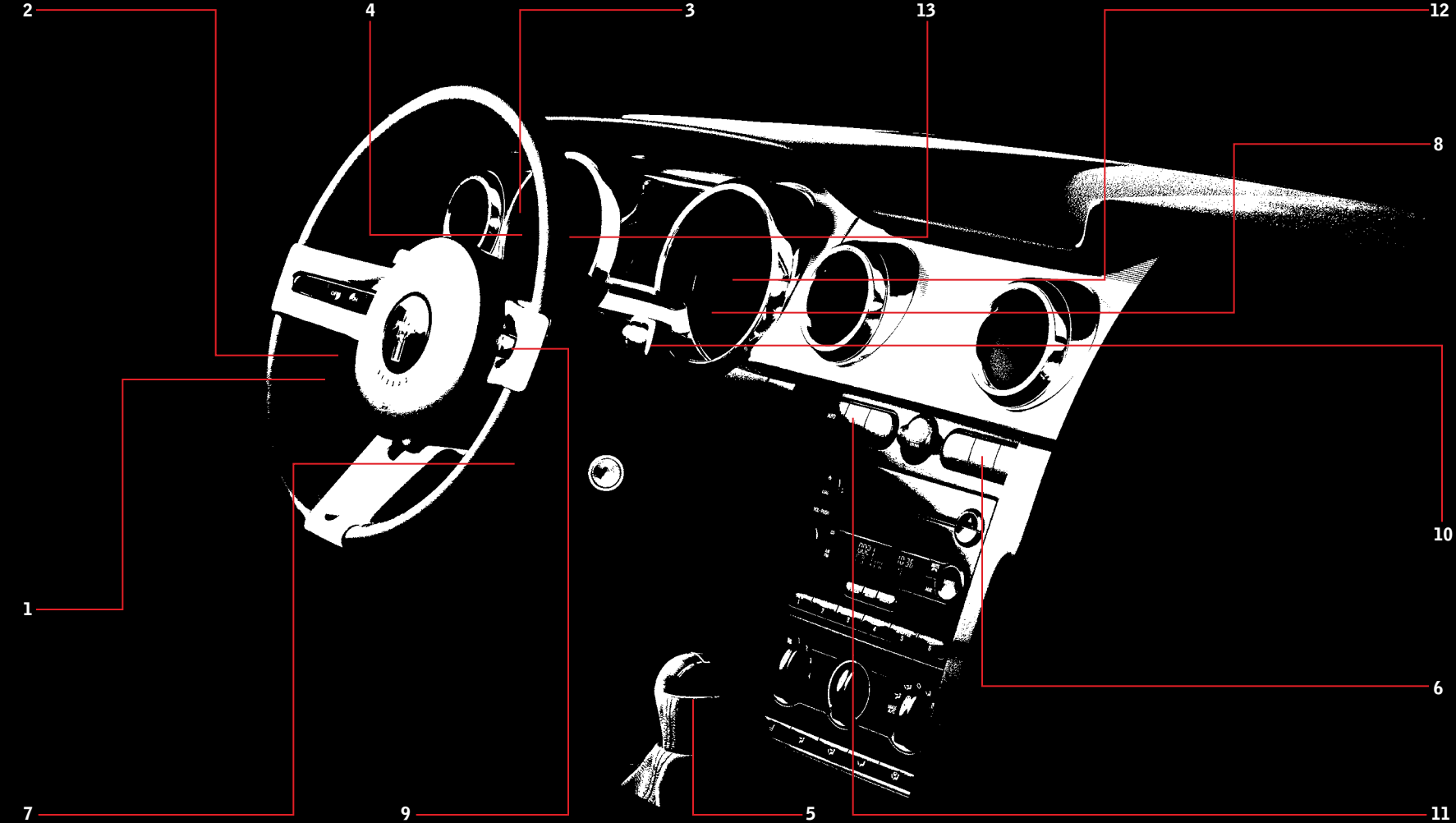
CD into your computer. (The CD jacket will tell you

if your computer meets the minimum configuration

requirements.) For the most detailed information,

refer to your Owner's Guide.

## MUSTANG QUICK REFERENCE GUIDE 2006



### 1 HEADLAMP CONTROL AND FOGLAMPS (IF EQUIPPED)

Turning the headlamp control clockwise to the first position turns on the parking lamps, instrument panel lamps, license plate lamps and the tail lamps. Continuing to turn the headlamp control to the second position turns on the headlamps in addition to the previous lamps. To activate the high beams, pull the turn signal lever toward you to the second detent. Pull the lever toward you again to deactivate them. Use the same lever to activate the "Flash to Pass" feature. Pull the lever toward you to the first detent to activate and release quickly to deactivate.



### 2 PANEL DIMMER

Use to adjust the brightness of the instrument panel and all applicable switches in the vehicle during headlamp and park lamp operation. Rotate the control fully upward, past the detent, to turn on the interior lamps.



### 3 ANTI-LOCK BRAKE SYSTEM (IF EQUIPPED)

The ABS warning lamp will momentarily illuminate when the ignition is turned on. If the light stays on or flashes, have your vehicle serviced. In an emergency, apply continuous force to the brake pedal. Do not pump the brakes. Any pulsation or mechanical noise you may feel or hear is normal.



### 4 SERVICE ENGINE SOON LAMP

The Service Engine Soon indicator lamp illuminates when the ignition is first turned to the ON position. If the lamp stays on or blinks, the On Board Diagnostics System has detected a malfunction. Drive moderately (avoid heavy acceleration or deceleration) and have your vehicle serviced immediately.



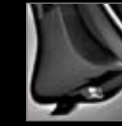
### 5 GEARSHIFT / OVERDRIVE CONTROL (IF EQUIPPED)

Use overdrive in the normal D (Drive) position for the best fuel economy. D (Drive) with Overdrive (O/D) can be deactivated by pressing the transmission control switch on the right side of the gearshift. Use this position only when driving conditions cause excessive shifting from O/D to other gears. Examples: city traffic, hilly terrain, heavy loads, etc., or when engine braking is required.\*



### 6 HAZARD FLASHER CONTROL

Push in the hazard flasher control and all front and rear direction signals will flash. Press the hazard flasher control again to turn them off. Use hazard flashers when your vehicle is disabled and is creating a safety hazard for other motorists.



### 7 TILT STEERING COLUMN

To adjust the steering wheel, push the adjustment lever down to unlock the steering column. While the lever is in the down position, tilt the steering column to your desired position. Then, while holding the steering column in place, pull the lever up to its original position to lock the steering column.



### 8 TRACTION CONTROL™ (IF EQUIPPED)

This system helps you maintain the stability and steerability of your vehicle on slippery road surfaces such as snow, ice or gravel. The system works closely with many of the elements already present in the Anti-Lock Braking System. The system defaults to ON. However, should you become stuck, try switching the Traction Control™ off.



### 9 SPEED CONTROL (IF EQUIPPED)

Press and release the ON button to engage speed control; press and release the OFF button to disengage it. Speed control does not work at speeds below 30 mph (48 km/h). To set a desired speed, press and hold the SET+ button until you reach that speed. Then take your foot off the accelerator pedal. You can increase speed using speed control by pressing and holding the SET+ button until you reach the desired speed or you can press and release the SET+ button and increase speed by 1 mph (1.6 km/h) with each tap. You can decrease speed the same way using the SET- button. Pressing the RES (resume) button will automatically return the vehicle to the previously set speed. The RES button will not work if the vehicle speed is below 30 mph (48 km/h). To disengage the speed control, press the OFF button or press the brake or clutch pedal (manual transmission only).



### 10 WINDSHIELD WIPER / WASHER

The windshield wiper / washer lever controls the windshield wiper modes, speeds and the windshield washer. For intermittent operation, move the control up one position, then rotate the rotary control to the speed you want. For normal or low speed wiper operation, move the control up two positions from OFF. For high-speed operation, move the control up three positions from OFF. For windshield washer control, pull the end of the stalk toward you. A quick pull and hold, and the wipers will swipe three times with washer fluid. A long pull and hold, and the wipers and washer fluid will be activated for up to ten seconds.



### 11 PROGRAMMABLE COLOR CLUSTER (IF EQUIPPED)

The instrument cluster gauges are backlit with white backlighting when the headlamps are off. When the headlamps are on, you can select one of six preset colors or create your own color (MyColor™) for the nighttime gauge backlighting. Headlamps must be on to set up the nighttime display. Note: A gauge in a warning condition will be lit red when the headlamps are on. Press SETUP to get to the DISPLAY COLOR set-up menu. Pressing RESET will scroll through the following selectable colors: Green, Purple, Orange, Blue, White, Red, and Adjust (to define MyColor™).

**Adjusting MyColor™:** The vehicle must be stationary to enter the MyColor™ adjust mode. To enter the MyColor™ adjust mode, hold RESET for three seconds at the Adjust menu, or press SETUP to scroll through the display colors again. When in the MyColor™ adjust mode, pressing RESET will step through the Red, Green, Blue and Exit options. You can create your own color by adjusting the levels of the three primary colors to achieve any of 125 different combinations. Pressing SETUP will increment the proportion of the color (Red, Green, or Blue) being adjusted. Try many combinations and record your favorites. To exit MyColor / Adjust, hold RESET for three seconds when prompted.\*



### 12 MESSAGE CENTER (IF EQUIPPED)

With the ignition in the ON position, the message center displays important vehicle information by constantly monitoring vehicle systems. You may select display features on the message center for a display of status. The system will also notify you of potential vehicle problems with a display of system warnings followed by a long indicator chime.\*



### 13 SECURILOCK™ PASSIVE ANTI-THEFT SYSTEM

This system is designed to prevent the engine from being started unless a coded key programmed to your vehicle is used. Your Securilock™ system is armed immediately after switching the ignition to the OFF/LOCK position. The THEFT indicator will flash every two seconds when the vehicle is armed. Switching the ignition to the ON position with a coded key disarms the system. Your vehicle comes with two coded keys. You can purchase additional coded keys from your dealer.\*



### ADJUSTING THE FRONT POWER SEAT (IF EQUIPPED)

The control is located on the side of the driver's seat. Press the front to raise or lower the front portion of the seat cushion. Press the rear to raise or lower the rear portion of the seat cushion. Press the control to move the seat forward, backward, up or down.\* **Manual Seat:** Lift handle to move seat forward or backward. Pull lever up to adjust the angle of the seatback. **Four-Way Seat Adjust (driver side only):** Pump the handle upward to raise the cushion and pump downward to lower the cushion.

\*For more detailed information, please refer to your Owner's Guide.

## MUSTANG 2006 INSTRUMENT PANEL